

Company Profile

Sheet Metal



Ahmad Industries LLC
Al Jurf Industrial Area 2
Tel: +971 6 7682005 Fax: +971 6 7682006
www.ahmadind.com

احمد للصناعات ز.م.م.



Ahmad Industries LLC

Al Jurf Industrial Area 2

Tel: +971 6 7682005 Fax: +971 6 7682006

www.ahmadind.com

احمد للصناعات ز.م.م.

Ahmad Industries is committed as a team with a vision to be recognized as the leader in the field of our expertise in manufacturing that exceeds our customer's satisfaction.

To achieve this goal we will provide technical information, training, tools & skills to each of our associate to motivate them in achieving the targets Empowering each employee so that each and every one of us is responsible and accountable for the fulfillment of our goal of quality beyond excellence

Best possible feedback from customers and its timely interpretation and development of remedies will be the base line for all future developments





We are conveniently located in Al-Jurf Industrial Area, with ample space and infrastructure to stock and supply the filtration products to anywhere in United Arab Emirates.

We provide products conforming to governing standard and of consistent quality which help us stand out in all our operations to achieve customer satisfaction for sales and services. Our team firmly believes in sharing information of the products and other extremely important details, necessary for the community and for our respected dealers.

We manufacture with
Excellence

Its our
Passion



Mr. Muhammad Ashraf

Founder and Director
Ahmad Industries LLC

At the outset, I deem it a privilege to introduce our company to our customers, stakeholders and the end-users as I firmly believe that knowing the company better helps our customers make informed decisions. With this objective, I humbly aim to give you a bird's eye-view of our company.

Ahmad Industries LLC is developed as a sister concern of National Electrical System Industries FZE. It has a diversified business structure. Our core business involves Sheet Metal cutting and sleeting. We provide Sheet Metal of highest quality. The investment decisions, the dedication of our employees and our listening to the customers' needs have all culminated into the creation of the state-of-the-art factory equipped with the most advanced technological machines, which increased our quality rapidly beyond the minimum quality standards.

Core Values

QUALITY– Our commitment to quality is of prime importance. Our engineering processes and systems are designed to provide the means, by which we deliver our service and commitments.

VALUES– Our Values are based on business ethics beyond the norms. We commit ourselves with the mutual relationship beneficial for us and our associates.

INTEGRITY– Our integrity is based on honesty and openness to our customers.

TEAMWORK– Our people work as a team. We encourage each member of our company to actively participate in making our systems and processes and we own them as our asset.

INNOVATION– We provide solutions and products which are cost effective and exceptional in quality.

● Technology

We choose the best technology for precision manufacturing

● Infrastructure

We have developed the most efficient infrastructure for optimal production

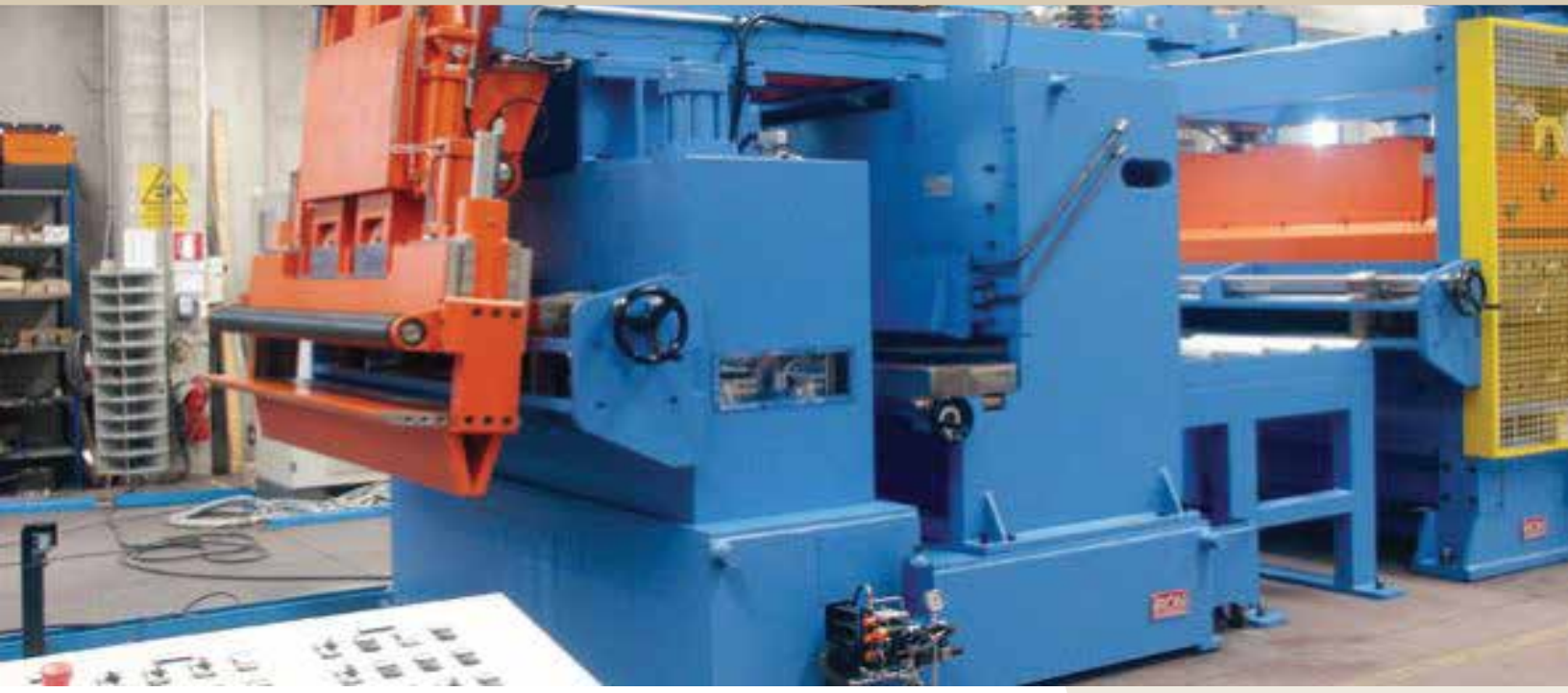
● Manpower

We choose the right people for right job

● Expertise

We continue improving our expertise in manufacturing



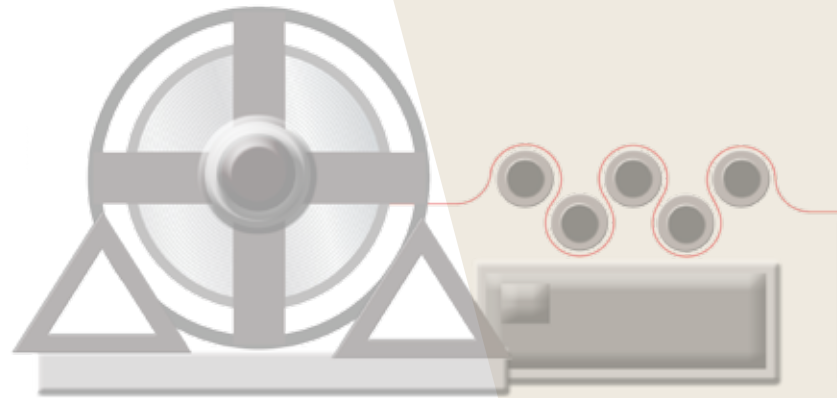


Sheet Metal Division

Fully Automatic Cut-To-Length Machine

Our sheet-cutting section comprises of latest Levelling & Transversal Cutting/Blanking line. The machines are fully automatic with CNC controls for efficient and accurate results.

These machines can handle GI, Hot Rolled, Cold Rolled, Aluminium, Stainless Steel Coils as well as fragile metals such as aluminium and copper according to individual requirement.



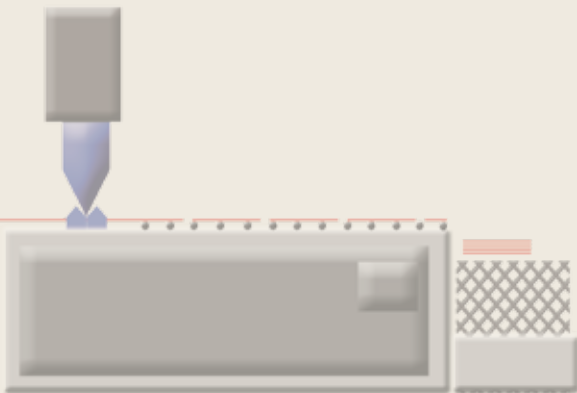
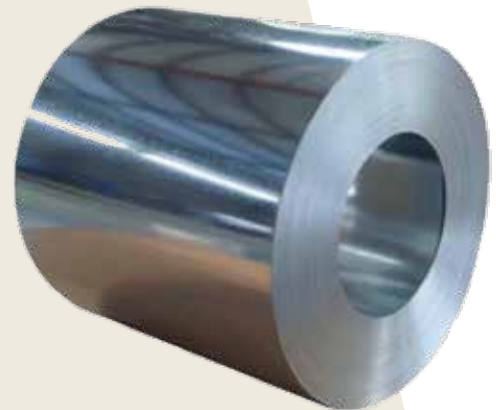
STEEL THE FIRST STEP TO QUALITY

Coil Cutting

We have the industry-best machines for coil cutting precise to millimeters. We have the option of variety of widths and thickness of sheet metal cut-to-lengths.

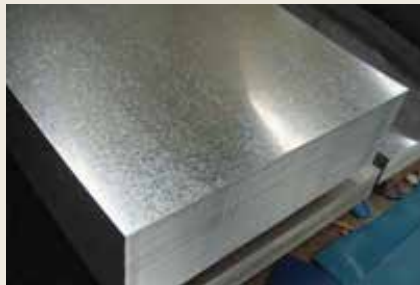
Coil processing equipment is needed in basically all metal processing industries, including stainless steel and Aluminum.

We have the best precision machines for metal sheet cutting upto 3mm thickness. Cutting width precision is within a tolerance of ± 0.5 on the setting.



Our cut to length line uses a roll feeding, AC servo drive, with a fully digital length control system that ensures fast positioning.

CNC cut to length line used together with a hydraulic shear or an air-clutch shear to carry out fast shearing and convenient clearance adjustment.





Slitting Services

The slitting service is additional to cutting, with accurate required dimensions of wide variety of sheet metal types and thickness.

Our latest machines are PLC controlled with high accuracy and speeds. These can effectively handle carbon steel, galvanized steel, silicon steel, tinsplate, stainless steel, pre-painted steel, aluminium and other



Slitting Line

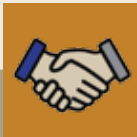
Precision slitting production line is for material 1-6 mm thick, 2,000 mm width of coil, with speed 60 m/min, cutting upto 30 strips lines.



Why Choose Us



**Focus on
Innovation**



**Client First
Attitude**



**Latest
Technology**



**Exclusive After
Sales Service**



**Experienced &
Dedicated Team**



**Attention to
Details**

More Than

500

Customer's Trust

Service
Quality
Trust



Our Services

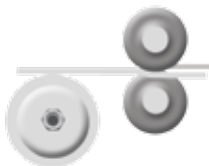
Sheet Cutting

Width: 1,500 mm
Length: 6 meter
Sheet Thickness: 0.5-5 mm
Coil Weight: 20 Tons



Slitting

Coil width: 1,500 mm
Sheet thickness: 0.5-5 mm
Coil weight: 25 tons



Integrated Workflow Management

We have sophisticated software and workflow automation for a seamless client experience.

Our Machines are precision CNC controlled within a tolerance of ± 0.5 on the setting. Our configuration is highly developed, constantly refined and industry-leading.



We aim to establish our obligation to Corporate Social Responsibility (CSR) through operations and working environments which are within the parameters of a socially responsible company.

This constitutes our continued commitment of adding values to company, Ajman Industrial Zone and the community itself. .